



## Upcoming Meeting

Inside this newsletter you will find flyers advertising for the California Rangeland Conservation Coalition's 11<sup>th</sup> Annual Summit. Many of you attended when we hosted the event in Oakdale two years ago. This year it will be held at the Stockton Ag Center. I have heard many positive comments from folks who attended their first Summit when it was in Oakdale, and I hope many of you will join us in Stockton. The theme for the event is centered on wildfires, specifically Wildfires and Rangeland Management: Mediating Impacts to Conservation and Ranching. If you have any questions regarding the tours or the Summit, please feel free to call me. Registration is done on-line, and you can pay by check if you do not want to pay by credit card. San Joaquin-Stanislaus CattleWomen are cooking, and will have a hearty egg breakfast as well as lunch and cookies for dessert, so please come hungry!

To register please go here: <http://ucanr.edu/summit2016>

Because the Rangeland Summit is being held locally in late January, we will not be holding the Oakdale Livestock Forum this year. I really hope those of you who normally attend the Forum will join us for the Summit. And by 2017 the University should have a new Beef Vet Specialist (replacing John Maas for many of you who know and remember him) so be sure to give me a list of any health topics you want to see discussed at the Forum in 2017.

## Pasture Management

With the growing season underway, and Mother Nature finally giving us some much needed rain and snow, it is actually time for you to start looking for problem weeds in both your irrigated pastures and annual rangelands. Many of the common weeds in the area will have germinated by now and be starting to grow. Early detection gives you more time to decide the proper management for controlling each weed. In addition, regardless of the control method you choose, young plants typically are easier to kill. Weeds may not be high on your priority list of things to do, but left unchecked, many weeds can quickly take over a pasture, reducing your forage base. Any toxic plants should be a high priority. Your livestock may not prefer to graze them, but in drought years we tend to see animals affected by toxic plants when there is less forage available. We have many great resources for weed control, including a free publication on toxic plants. You can find many UC publications on-line or in our local Cooperative Extension office.

### *Did You Know?*

*We have many great resources for weed control, including a free publication on toxic plants.*

---

By Theresa  
Becchetti,  
  
Livestock & Natural  
Resources Advisor



## 2016 SUMMIT and TOURS

### Wildfire and Rangeland Management Mediating Impacts to Conservation and Ranching

The Summit will address challenges and opportunities to improve rangeland management to reduce the incidence (scope and severity) of catastrophic wildfire. Two of the state's most devastating wildfires in history, the Valley and Butte Fire occurred in the past year and yet, the full impact of these fires to conservation interest and rancher sustainability is yet to be determined. Group discussions during the summit will consider lessons learned from recent fires and where we go from here. Discussion outcomes will be compiled into an advocacy paper.

#### Friday, January 22 (9am – 3pm), Ag Center in Stockton

Speakers and Dialogue \* Photography Contest \* Conservation Poster Display

#### Proposed Agenda

**9:15am Bill Stewart, UC Berkeley – Framing California's Working Landscapes as Solutions Rather than Problems**

**9:45am Anne Yost, USFS, retired** – Barriers and Opportunities on Public Land to manage vegetation to reduce wildfire risk; Impacts of catastrophic wildfire to California's forest lands

**10:15am Justin Oldfield, CCA** – Barriers and Opportunities on Private Land to manage vegetation to reduce wildfire risk: Impacts of catastrophic wildfire to working rangelands

**10:45-11:00 Break**

**11:00am Ranchers' perspective on wildfire** – Doug Joses and Shaun Crook will share how wildfire has impacted their ranch and lessons learned

**11:30am Larry Forero, UCCE** – Economic Impact of wildfire, historical perspective on rangeland vegetation management as it relates to wildfire risk

**12:00pm – 1:00pm LUNCH Hamburgers with all the fixins' by San Joaquin-Stanislaus CattleWomen**

**1:00pm Mary Marsh, High School Youth Delegate** – Fire Management – Barriers and Opportunities

**1:10pm Calfire** - Challenges of Suppressing Today's Wildfires in California/ Recommendations for landscape management for better wildfire control/suppression outcomes

**1:40pm Tom Scott** - Impacts of Catastrophic wildfire to wildlife and conservation

**2:10pm Leslie Roche, UC Davis** – Grazing management after wildfire: State of the science

**2:40pm GROUP DISCUSSIONS.** At your table, please discuss a barrier and list possible solutions. These will be compiled into one advocacy paper.

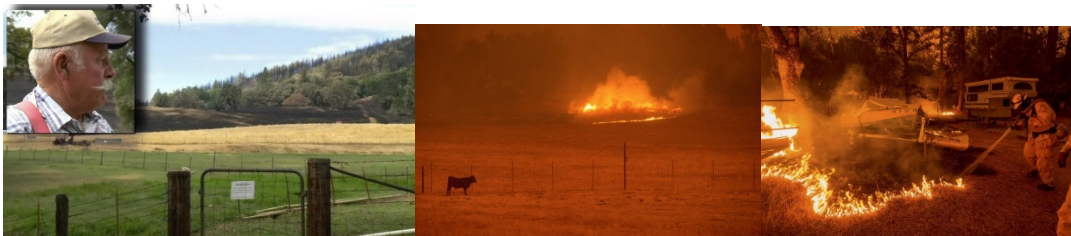


## California Rangeland Conservation Coalition

# Butte Fire Tour

January 21, 2016

The 2015 Butte Fire burned 70,868 acres. Discussion will be centered on how the area has responded during the fire as well as post-fire actions to prevent erosion and a discussion about preventing similar fires in the future.



### Speakers will include:

Chris Swann – East Bay MUD  
Adam Freese - Cal Fire  
Bob Garamendi – Rancher  
Doug and Loree Jose - Rancher



- ❖ Tour Begins at the Pardee Center, 3535 Sandretto Road, Valley Springs, CA at 10am
- ❖ Please arrive by 9:30 to check in
- ❖ We will caravan to other tour stops
- ❖ Sack Lunch Provided
- ❖ Tour will conclude roughly 4:30pm



## Rim Fire Tour – Thursday, January 21, 2016

256,895 acres (401 square miles) burned in 2013. We'll learn how the area is recovering for habitat, grazing, logging, and local economics.



### Speakers

Marty Gmelin and Maria Benech – US Forest Service

Tim and Dan Erickson – Rancher, permittee

Stewart Crook – Rancher, permittee

Leslie Roche – University of California Cooperative Extension Rangeland Specialist

Tim Tate – Sierra Pacific Industries

Ryan Burnett – Point Blue

Sherry Brennan – Tuolumne County Supervisor

Justin Oldfield – California Cattlemen's Association

Check in and Travel to Rim of the World and Back

- ❖ **Tour space is limited, so register early. Vans will be provided for everyone.** For local participants, meet at Rim of the World Overlook, Hwy 120, Buck Meadows, CA at 11:00 am.
- ❖ **Tour Departs from the Robert J. Cabral Ag Center 2101 E. Earhart Ave. Stockton, CA**
- ❖ Meet at **8:30am at the Ag Center**, vans leaving at 9am. Return to the Ag Center by 5:30pm.
- ❖ *There are contingency plans for inclement weather.*
- ❖ Sack Lunch Provided

Sponsors – *Thank you!*

*US Forest Service*

*Sierra Foothills Conservancy*





## **California Rangeland Conservation Coalition**

### **Corral Hollow/Tesla Fire Tour**

January 21, 2015



#### **Tesla Tour - Case Study Summary**

*Discussion of impacts of grassland fire on grazing lands and threats to cattle: Revegetation of grassland; Value of grazing as fire management tool; and Minimizing fuel loads, especially at urban interface areas.*

#### **PRESENTERS**

- ❖ *Mark Connolly, J.D., Rancher and Board Member, Alameda County Resource Conservation District (ACRCD)*
- ❖ *Marilyn Russell, Rancher, Retired Biologist and Teacher, Board Member, ACRCD Board of Directors*

#### **AGENDA**

- ❖ *Tour space limited to 25 persons, so register early.*
- ❖ *12 Noon: Meet and register at the Martinelli Center Board Room. Bag Lunches will be served.*
- ❖ *Presentation by Mark Connolly J.D., 12:15-1:00 P.M.*
- ❖ *1:15: Depart for Tesla Fire Tour (caravan). At site, gather into all-wheel drive vehicles for tour. (To volunteer your all-wheel drive vehicle and to drive, please contact Katherine Boxer at the ACRCD.)*
- ❖ *3:00 P.M.: Depart from field tour*

**SPONSOR - Thank you!**

**Alameda County Resource Conservation District  
Martinelli Center, 3585 Greenville Road, Livermore, CA 94550  
(925) 371-0154**



**University of California**  
Agriculture and Natural Resources

# Livestock Lines

Stanislaus & San Joaquin Counties  
January 2016 ♦ Volume 22. No. 1

---

## *Look What's Inside:*

- **California Rangeland Conservation Coalition's 11<sup>th</sup> Annual Summit**
- **Pasture Management**

Current Resident or:

NON PROFIT ORG.  
US POSTAGE PAID  
MODESTO, CA  
PERMIT NO. 400

University of California  
Cooperative Extension  
3800 Cornucopia Way, Suite A  
Modesto, CA 95358